

OCEAN DIVA
— A WORLD APART —

Brochure.

A world apart.

At the heart of our mission lies the belief that travelling on the great waterways not only broadens our horizons but also ignites fresh ideas and perspectives. It's the unique blend of physical movement and emotional journey that water travel offers, leaving us with an expanded sense of what's possible once we return to land.

Here at Oceandiva, we merge the vibrant energy of city life with the liberating essence of the water. We aim to transform ordinary events into extraordinary experiences, almost like stepping into another world, yet with the familiar comfort of being close to home. We provide not just a venue but a blank canvas on the water, where your vision for an event can fully come to life.

We look forward to welcoming you aboard where together we can create unforgettable moments that truly embody what it means to be 'a world apart'.




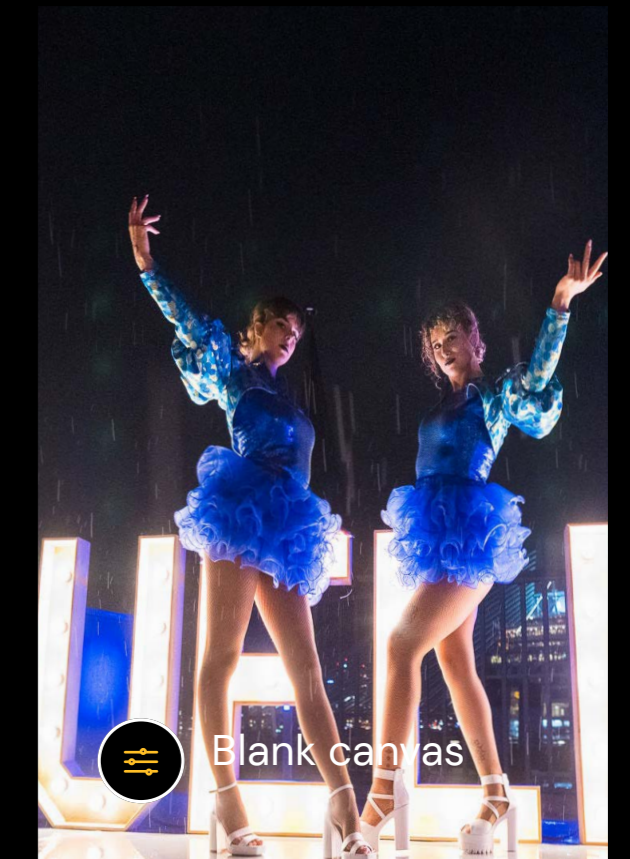
Edwin Petersen
CEO



 Freedom of water



 In the heart of the city



 Blank canvas

Our ships.



Oceandiva Original.



Oceandiva Futura.



Oceandiva London.



Oceandiva Original

Oceandiva Original is anything but ordinary. This sailing event venue adds a touch of magic to your event.

Impressive & Contemporary.

Sleek and modern, the Oceandiva Original redefines the extraordinary. Far from the ordinary, this floating event venue infuses your gatherings with an enchanting charm. Its adaptable interior and versatile spaces are designed to realise your vision to the fullest.

Accommodating anywhere from 100 to 1,500 guests, the Oceandiva Original is perfectly equipped for a wide range of corporate events. Its grandiosity as an event venue isn't just impressive — it's unforgettable, ensuring your event leaves a lasting impact on all your guests.

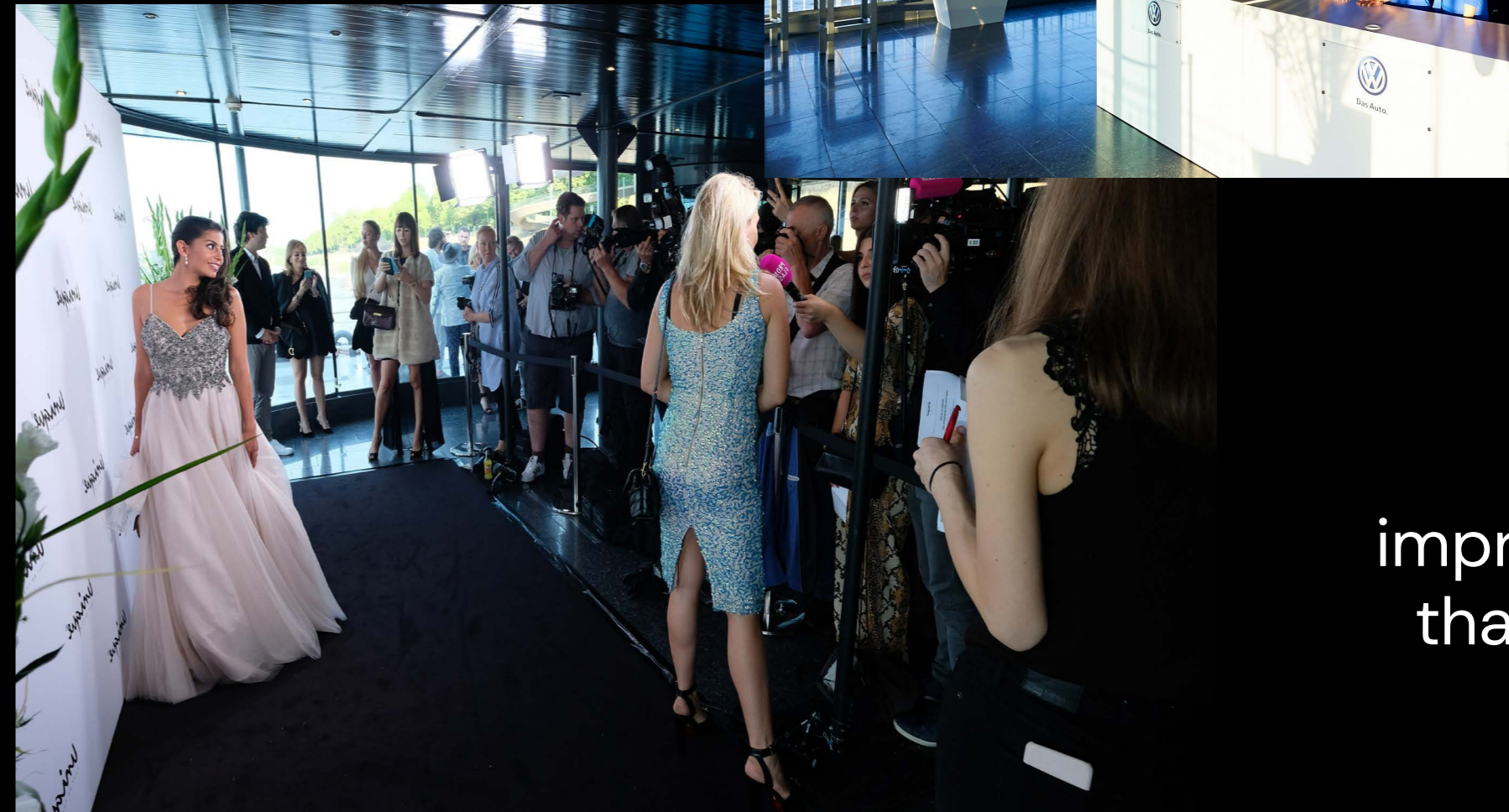




Entrance & Foyer.

Step into a welcoming space where the foyer greets your guests with a captivating 180-degree view over the water, crafting an unforgettable first impression.

Thanks to its versatile 'blank canvas' design, the foyer can be tailored precisely to your preferences for greeting or registering your guests. This adaptability ensures a personalised touch that resonates with every attendee the moment they arrive.



A first impression that lasts.



12

Central area & balcony.

At the heart of the Oceandiva Original lies its central area: a majestic space standing five meters high, waiting to be transformed according to your desires.

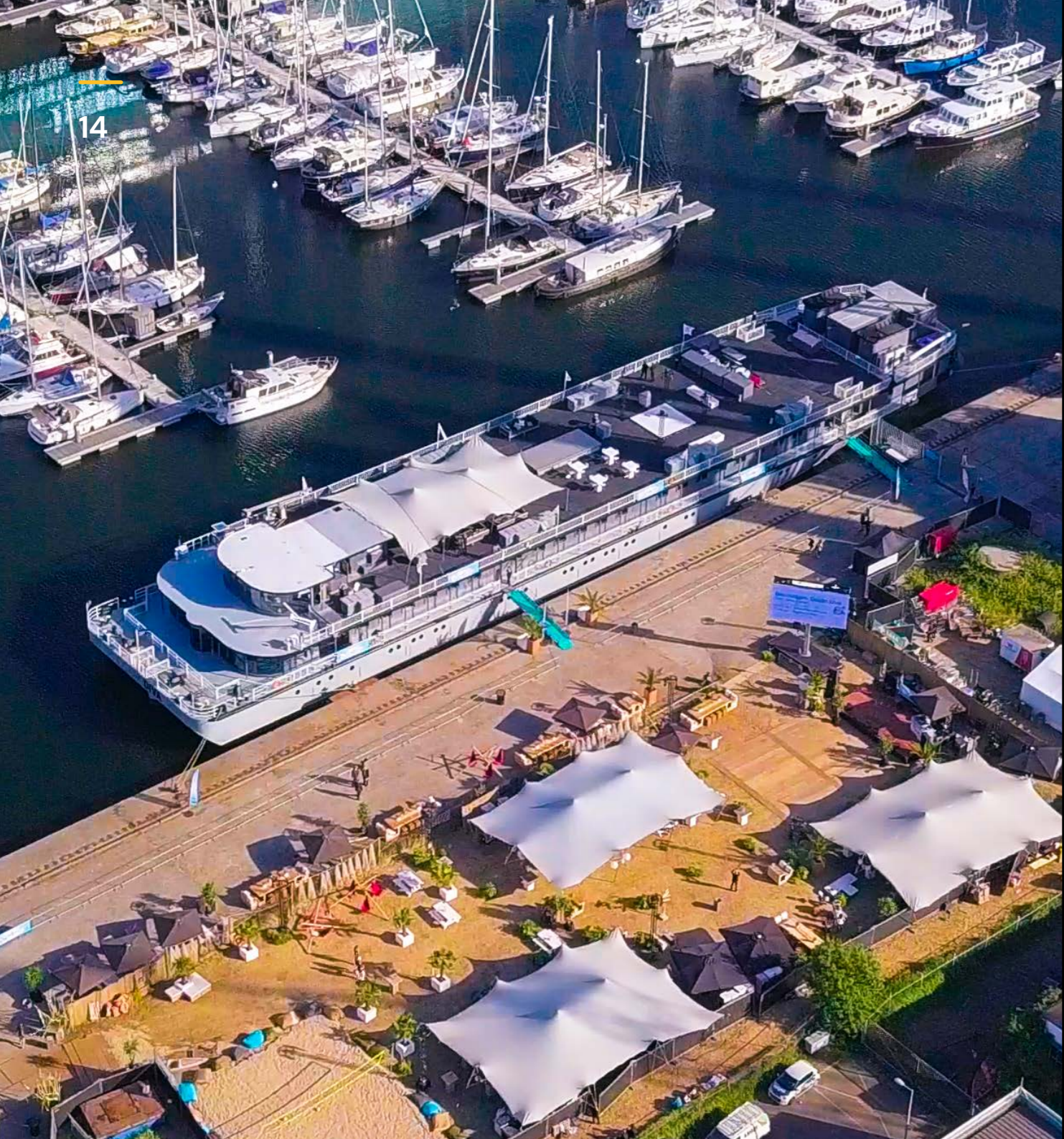
This expansive core serves as a versatile canvas, ready to accommodate anything from a sophisticated seated dinner and themed parties to brand exhibitions showcasing your latest models.

The balcony overlooking this central area provides a perfect sub-space, complete with a separate bar. It offers guests a privileged vantage point with an excellent view of the stage below, enhancing their experience and engagement with your event.



13

Create
your own
atmosphere.



Outside deck.

Elevate your event by utilising the outside deck, complete with its own bar and a sweeping all-around view of the water. This open-air setting allows your guests to bask in fresh air while enjoying a stunning 360° panorama from the deck and terrace. Should the weather be less than ideal, we have various solutions to provide shelter, such as tents, ensuring the deck remains a versatile and comfortable space.

This adaptability makes the deck perfect for an array of uses: as additional event space, a break-out room, a spacious outdoor bar, or even as the vibrant heart of a silent disco during a summer festival.



Experience
the freedom
of the water.



Facts, figures & capacity.

Size

Length	86 m/282 ft
Width	16 m/52 ft
Space	2.500 m ² /26.910 ft
Areas	4
Total capacity	100-1.500 pax

Facilities

6 bars	35 toilets
AV set (on request)	Flatscreens
Airconditioning	WIFI (on request)
Cloakroom	Kitchen
Elevator	

Dinner

Oceandiva Original offers a unique dinner setting for any type of corporate dinner.

Sit down dinner	100 - 500 guests
Buffet style dinner	100 - 1.500 guests
Walking dinner	100 - 1.500 guests

Company event

The five-meter-high central area is ideal for a festive evening where entertainment is the centrepiece.

Company event	100 - 1.500 guests
---------------	--------------------

Brand event

Oceandiva Original is, due to the blank canvas interior, completely customisable to your wishes. Your marketing or brand event will make a huge impact on your guests!

Brand event	100 - 1.500 guests
-------------	--------------------

Roadshow

The contemporary central area is an ideal environment for any kind of roadshow or exhibition. Cars and other high, heavy or large objects can be hoisted on board without any difficulty through the specially designed sliding hatch.

Roadshow	100 - 1.500 guests
----------	--------------------

Conference

From global conferences to smaller, more intimate settings, the ship offers a wide range of options.

Conference	100 - 600 guests
------------	------------------



OCEANDIVA

OCEANDIVA
ORIGINAL



Oceandiva Futura

Out-of-the-box and on the water: event vessel Oceandiva Futura adds a whole new dimension to your event.

Futuristic & Modern.

Step aboard the Oceandiva Futura, an event vessel that reimagines the boundaries of creativity on water. The Futura stands out as a symbol of 'remarkable' and 'exclusive', offering a unique blend of futuristic flair and welcoming warmth in its design.

This vessel is your blank canvas, a space where imagination meets reality, aptly named the Oceandiva Futura. With a capacity to accommodate from 100 up to 600 guests, the Oceandiva Futura is versatile enough for both grand-scale and more intimate events. Known for its inspirational ambience, the vessel features vast windows, multiple levels, and an expansive outer deck, offering panoramic views of your chosen cityscape. The Oceandiva Futura is not just a venue; it's a gateway to an unparalleled event experience.





Entrance & Central area.

As guests step aboard, they are immediately welcomed into the heart of the ship, the central area, where floor-to-ceiling windows present a breathtaking 180° vista over the water. This inviting and versatile space is perfect for an array of events, whether it's a reception, a lively party with a band or DJ on the expansive stage, or any other occasion you envision.

The central area serves as a hub, seamlessly connecting to other parts of the ship. Guests can easily access the cloakroom and restrooms located downstairs, step onto the lounge deck on the same level, or ascend to the upper decks. This ensures a smooth flow, enhancing the overall experience of your event.



A panoramic view over the water.



Lounge deck & VIP deck.

Explore the distinct charm of Oceandiva Futura's two sub-areas, each uniquely designed to elevate your event. The VIP deck on the first floor presents an ideal backdrop for a sophisticated reception or an elegant dinner, giving a sense of exclusivity and style.

Meanwhile, the lounge deck is tailor-made for a more relaxed ambience, perfect as a reception area or a laid-back chill-out zone complemented by soothing music.

Each area is adorned with large windows that bathe the spaces in natural light, creating an inviting and comfortable atmosphere. Your guests will feel instantly welcomed in these thoughtfully designed spaces, where luxury meets comfort.



Surrounded
by water:
sub-areas
with a view.



Outside deck.

Transform your favourite city into a breathtaking backdrop for your outdoor event. Our exceptional outside deck, offering panoramic views over the water, is designed to leave a lasting impression on your guests. Equipped with all the essentials, it's the ideal setting for a truly memorable occasion.

Versatile for use in any season, the outside deck adapts to your needs. Whether it's adorned with a stretch tent or left open to the elements, this space provides the perfect setting to toast to special moments, bask in the sunshine or under the night sky, and experience the liberating sensation of being on the water.



For any
occasion,
in every
season.



Facts, figures & capacity.

Size

Length	61 m/200 ft
Width	11 m/36 ft
Space	1.250 m ² /13.455 ft ²
Areas	4
Total capacity	100-600 pax

Facilities

4 bars	14 toilets
AV set (on request)	Flatscreens
Airconditioning	WIFI (on request)
Cloakroom	Kitchen
Elevator	

Dinner

What better way to enjoy your dinner than with a sublime view of your destination's fine surroundings?

Sit down dinner	100 - 300 guests
Buffet style dinner	100 - 600 guests
Walking dinner	100 - 600 guests

Company event

The indoor and outdoor spaces of the Futura offer stunning waterfront views, giving your guests the ultimate party experience on the water.

Company event	100 - 600 guests
---------------	------------------

Brand event

With its imaginative use of internal space, the venue is a welcoming and inspiring platform ready to fully use your creativity.

Brand event	100 - 600 guests
-------------	------------------

Roadshow

Let your guests watch breathtaking sunsets over the river while anticipating an astonishing roadshow.

Roadshow	100 - 600 guests
----------	------------------

Conference

With its panoramic view over the water, the ship is flooded with natural daylight which gives your guests the perfect balance between functionality, inspiration and serenity.

Conference	100 - 200 guests
------------	------------------



OCEANDIVA
FUTURA



Oceandiva London

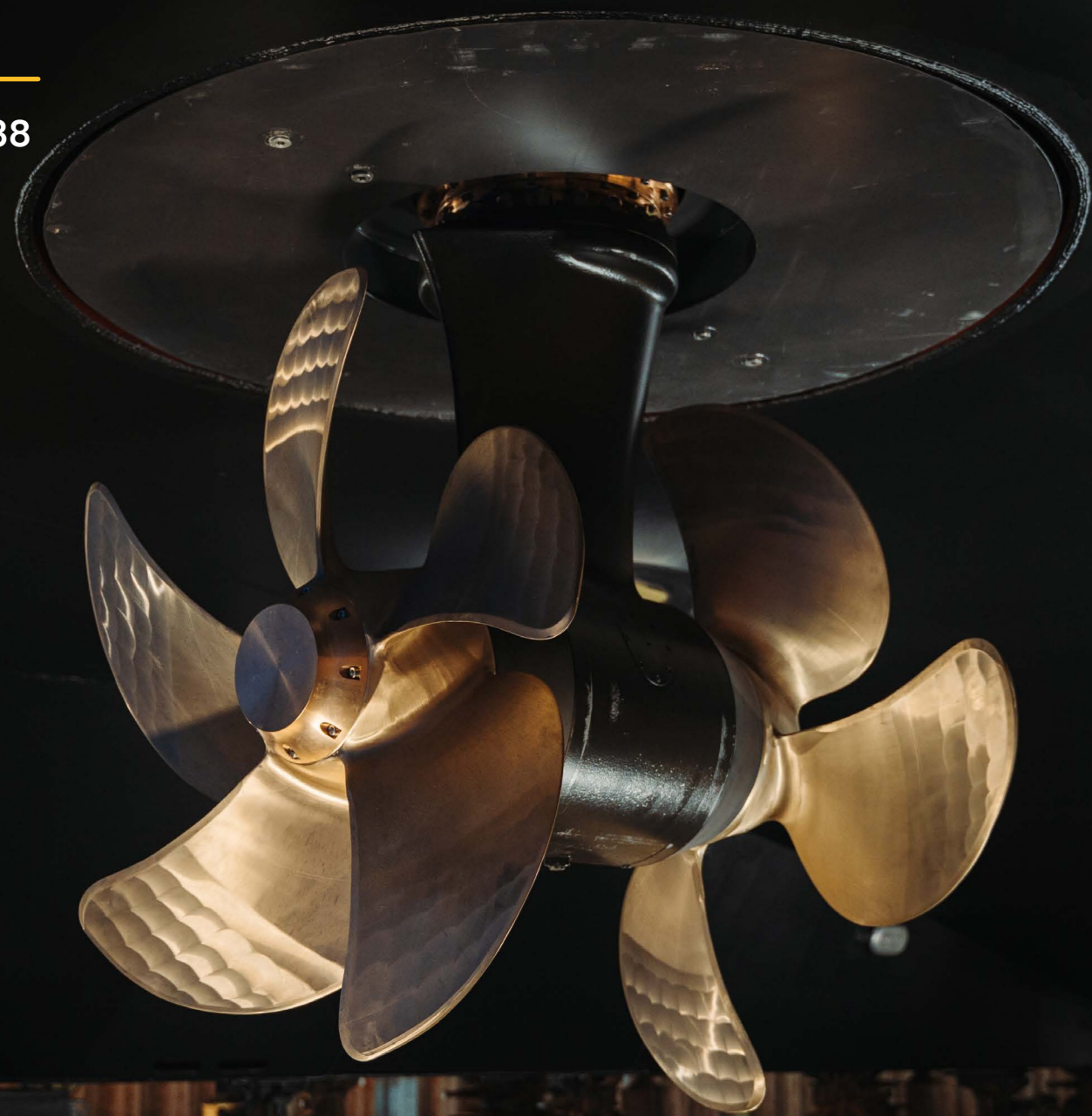
The Oceandiva London is the first carbon-neutral event venue on the Thames in London.

Revolutionary & green.

The Oceandiva London is the first carbon-neutral event venue on the Thames in London. This unique location offers customers the opportunity to organise sensational events on the river, spread over three decks. Both static and sailing, in the heart of the city.

Whether static or sailing down the Thames, this exceptional vessel is designed to complement London's iconic skyline, connecting guests to London's world-renowned landmarks and surroundings. Oceandiva London arrived in London in mid 2023.



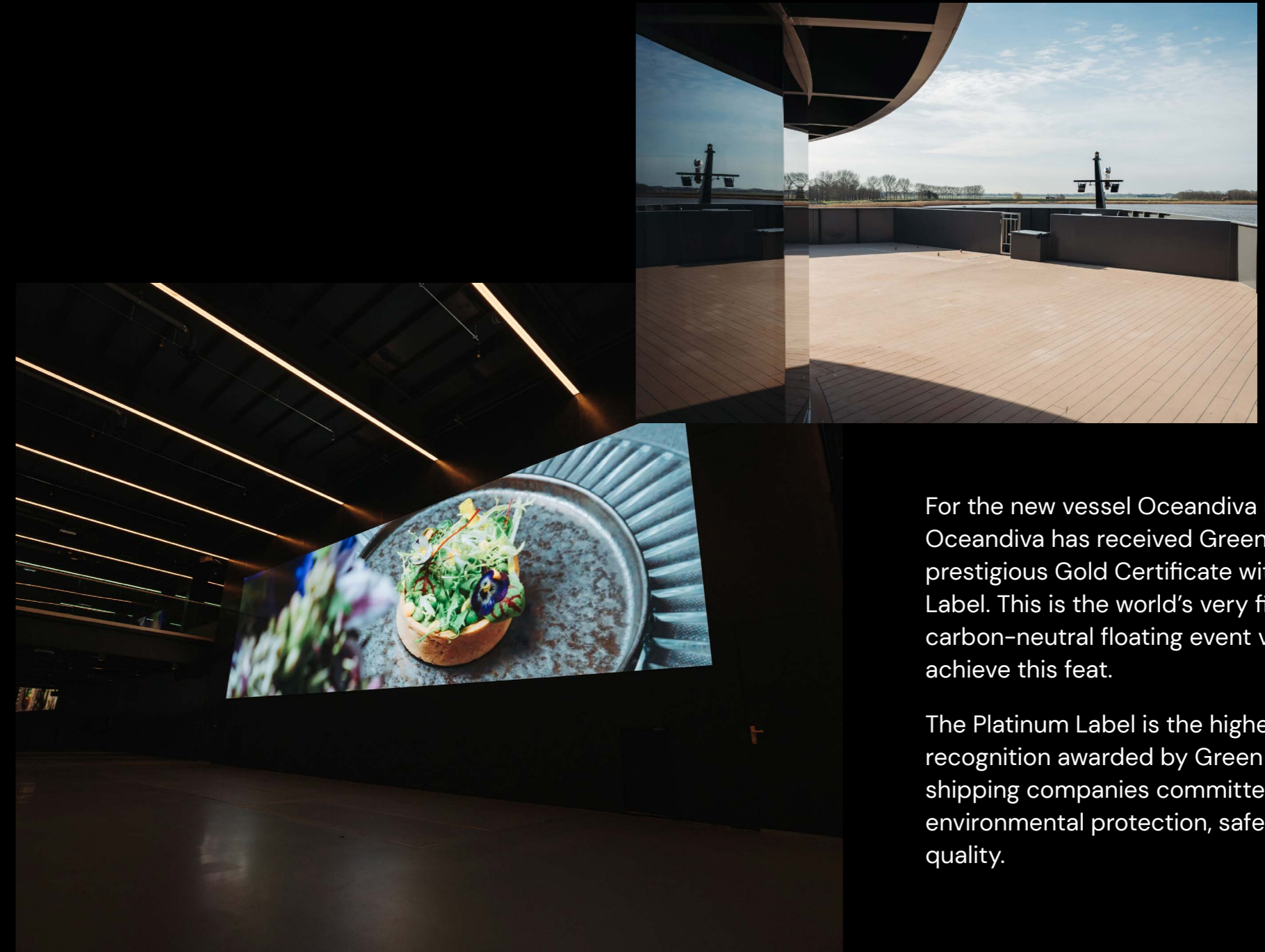


We innovate to inspire others.

Trailblazing means finding new ways of doing things, whether it's for our clients, our guests or even for our planet.

Oceandiva embraces sustainability, creativity, smart production solutions and the latest developments from other industries – our goal always is to set new bars and examples for our own industry and to inspire the shape of events to come.

Journeying into the unknown is the best way to discover the unprecedented. Sometimes this leads us into rough waters, but that only tells us we're heading where no one's gone before.



For the new vessel Oceandiva London, Oceandiva has received Green Award's prestigious Gold Certificate with a Platinum Label. This is the world's very first carbon-neutral floating event venue to achieve this feat.

The Platinum Label is the highest level of recognition awarded by Green Award for shipping companies committed to environmental protection, safety, and quality.



Facts, figures & capacity.

Size

Length	86 m/282 ft
Width	17 m/56 ft
Space	2.625 m ² /28.255 ft
Areas	4
Total capacity	100-400* pax

*Limited 400 guests whilst capacities are being determined during testing period.

Facilities

3 bars	35 toilets
Light & sound set	Flatscreens
Airconditioning	WIFI (on request)
Cloakroom	Kitchen
Elevator	





OCEANDIVA
— LONDON —

IMO 9938078

London

OCEANDIVA
— LONDON —



The Netherlands.



Germany.



Belgium.



The United Kingdom.

Destinations.

In the heart of your favourite city.

Discover an extraordinary venue in the heart of your preferred city. Whether your event is set in The Netherlands, Germany, Belgium, or London, Oceandiva offers a unique fusion of experiences. We blend the exclusivity and tranquillity of a water getaway with the convenience and vibrancy of city life.

Our ships, anchored in the core of your favourite city, deliver not just a stunning backdrop but also easy accessibility. Choose Oceandiva for an event location that marries the best of both worlds: the serene allure of the water with the dynamic pulse of the city.



General information.



Event types.



Sustainability.



Entertainment, hospitality & catering.



Company dinner.

Collaborate with us to craft a distinctive dining experience, where next-level catering, entertainment, and service converge. Dining with a group on an Oceandiva ship promises an unforgettable experience for your guests. Our chefs pay meticulous attention to specific preferences, tastes, and dietary requirements, ensuring a tailor-made, delicious menu for every occasion.



Local caterers
create an
unforgettable
experience.



Company party.

Envision a night where speeches and accolades lead to unforgettable moments on the dance floor with your colleagues. The Oceandiva ships provide the perfect backdrop for legendary company parties. The only limit is your creativity; transform the ship into a roaring twenties extravaganza or immerse it entirely in your brand's theme. With Oceandiva, your company party becomes more than an event; it becomes a milestone.



Customise
your party
from A to Z.



Roadshow & Floating exhibition.

Our ships are equipped with everything necessary to showcase your products in a dynamic exhibition setting. Whether anchored in one city or journeying as a roadshow to multiple destinations, our vessels serve as unparalleled floating showrooms.

With Oceandiva, you bring your products and narrative directly to your clients, partners, and suppliers, reversing the traditional dynamic. Opt for the utmost efficiency with a sailing venue that's more than just a space, it's an experience. Oceandiva specializes in transforming your roadshow into an extraordinary and unique adventure.



Showcase
your product
in a floating
showroom.



Brand event & Car launch.

A brand transcends products; it's about creating an experience. Host your brand event on an Oceandiva ship, where your product launch, new company direction, or market entry strategy can take centre stage. These vessels offer a unique setting that not only enhances your brand's image but also provides an engaging experience for your guests. Utilize Oceandiva's distinctive ambience to bring your brand to life and strengthen your company's image in a memorable way.



Bring your brand to life.



Congress & Meeting.

Hosting a congress on an Oceandiva ship elevates the experience beyond the ordinary, inspiring attendees with fresh insights in a remarkable setting. The serenity of the water primes your guests for a clear, open mindset, complemented by a customizable environment tailored to your specific needs. This unique setting not only enriches the experience but also magnifies the impact and objectives of your congress, creating a memorable and effective event.



Inspiring
congress
locations.



Oceandiva's commitment to the planet.

At Oceandiva, we are at the forefront of eco-friendly sailing, championing sustainability in the shipping and events industries. Our vision is ambitious yet clear: to transition all our venues towards hosting completely CO2-neutral and fossil-free events in the near future. By choosing Oceandiva, you're not just selecting a venue; you're contributing to a greener, more sustainable future.

Oceandiva uses CO2-reducing biofuels

Our ships in the Netherlands, Belgium and Germany operate on an advanced blend of biofuel. This biofuel is made from 100% certified waste or residual flows and ensures a standard CO2 reduction of 20%. By sailing on this biofuel blend, less particulate matter and nitrogen particles are emitted into the air, improving air quality.

The world's first carbon-neutral event ship

Oceandiva has built the world's first CO2-neutral event ship. The event ship, based in London, will be powered by electricity and equipped with a circular waste management system. The Oceandiva London has received a golden certificate with a platinum label from Green Award as the first event ship in the world.

Biologic oil

We use biodegradable oil. This reduces the oil drain by 50% relative to synthetic oil.

Water use

To save water, the toilets are rinsed with river water. Once the water has served its purpose, it goes to designated tanks that will be picked up by a waste processing company.

Power lock

Once moored, the ships are connected to shore power. At their home port, the ships are continually connected to shore power: an environmentally friendly measure that is increasingly being applied by governments in The Netherlands, Belgium and Germany.

LED-lighting

For sustainability, the ships are equipped with LED lighting. LED lamps have a longer lifespan and lower energy consumption, making them an environmentally friendly lighting source.

Sustainable partners

We are happy that many other companies share the same belief and are committed to environmental and social practices to deliver more sustainable events. Oceandiva is keen to further improve ways to go green and will continue to engage with our event partners and suppliers to increase our positive impact across everything we do.



Entertainment, hospitality, & catering.

At Oceandiva, we cater to your unique preferences, whether you desire fair trade options, vegetarian delights, or shared finger foods. Our local catering partners are committed to accommodating your specific requirements. We lead with a focus on sustainability, creativity, and smart production solutions, drawing inspiration from the latest trends in various industries.

Our goal is to redefine the standards of event hosting. Allow us to inspire your next event with our innovative approach!



Our crew loves
to welcome
your guests
on board!



The Netherlands (Head office)



TT Vasumweg 156
1033 SH Amsterdam
The Netherlands

T: +31 (0)20 662 7766

E: info@oceandiva.eu

www.oceandiva.eu

Germany



Stadttor 1
50219 Dusseldorf
Germany

T: +49 (0)211 437 19 70

E: info@oceandiva.eu

www.oceandiva.eu

Belgium



TT Vasumweg 156
1033 SH Amsterdam
The Netherlands

T: +31 (0)20 662 7766

E: info@oceandiva.eu

www.oceandiva.eu

The United Kingdom



Admirals Court 9-10, Copper Row
London SE1 2LH
United Kingdom

T: +44 (0)20 7836 1035

E: sales@oceandivalondon.co.uk

www.oceandivalondon.co.uk

Contact us.

OCEAN DIVA
— A WORLD APART —